

PEOPLE • CUSTOMERS • GROWTH



# SIO FIRE & SAFETY DOORS

DURABLE SAFE. CUSTOMISABLE



JALVAL®



[www.siof.co.in](http://www.siof.co.in)



[contact@siof.co.in](mailto:contact@siof.co.in)

# Contents

- **SIOF PRESTIGIOUS CLIENTS**
- **OFFICE DOORS & PARTITIONS**
- **LOUVER DOORS**
- **SS FLUSH SWING DOORS**
- **CLEAN ROOM DOOR & PARTITION SYSTEMS**
- **MODULAR CLEAN ROOM PARTITIONING SYSTEM**
- **MODULAR CLEAN ROOM SYSTEM**
- **WOODEN,PCGI, & GLASS FIRE DOOR**
- **WOODEN LEAD LINED DOOR**
- **OPERATION THEATER DOOR**
- **FIRE FRAME DETAILS**
- **DOOR LEAF CONSTRUCTION**
- **DOOR LEAF DESIGNS**
- **STANDARD DOOR COLORS**
- **IRONMONGERY**
- **HANDINGS**

# | SIOF PRESTIGIOUS CLIENTS



People. Customers. Growth.

[www.siof.co.in](http://www.siof.co.in)  
[contact@siof.co.in](mailto:contact@siof.co.in)  
 +91-11-4103-2065





Security and Safety Assured

# OFFICE DOORS & PARTITIONS

SIOF office metal doors are manufactured with high quality GPSP of 1 mm thickness and provided with advanced locking and door operating hardware. Special techniques are used to achieve varied design options as per aesthetic & office decor requirements. Customer can choose hardware as per the security need from extensive range of SIOF.

## Application

- Offices
- Cabin entrances
- Main entrances
- Conference rooms
- Cafeteria
- Institutional buildings

## Specification

- **Frame Sheet Thickness** : 1.2mm
- **Leaf Sheet Thickness** : 0.8mm
- **Lock System Standard** : SIOF-DL-45 (dead bolt for extra security)
- **Pivot/Hinge SS Butt Hinge** : SIOF-SS-BH 4x3x3
- **Door Closer Overhead Door Closer** : SIOF-DC-CURVE
- **Other Hardware** :
  - Kick Plate (Optional)
  - Concealed Flush Bolt (Double Leaf Door)
  - Drop Seal
  - Door Bumpers
  - Door Stopper
- **Design Options** :
  - Designed as per office decor
  - Can be Flush, Vision Lite, Louvers, Embossed in varied size requirement.
- **MOC** : GPSP Sheet with Zinc Coating/Stainless Steel
- **Finish** : Epoxy Polyester Powder Coated
- **Door Dimension** : upto 2400mm wide and 3000mm height

## Features

- Zero maintenance
- Customised design options
- Sound proof





Security and Safety Assured

## Office & Commercial Partitions

- **Panel Width** : 1200mm, 1150mm and 900mm as standard.  
Panel thickness of 60/80mm
- **Panel Height** : Up to 6000mm with provision to have stacked panels for higher level applications.
- **Base Detail** : Raised / C-Type Base.
- **Infill Material** : Glass Wool, Honeycomb kraft paper with aluminium core & Polyurethane Foam.
- **Panel Weight** : Dependent upon specification and thickness of panel.
- **Surface Finish** : Epoxy Polyester Powder coated as per RAL colours, SS (matt/ mirror finish) and PPGI Finish.
- **Panel Connection** : Each Panel is connected to its adjacent unit or door unit with a friction type Heavy Duty Clip. This allows speedy installation and dismantling.
- **Glazing** : Single/ Double flush glazing with 6mm toughened glass on both sides within a stainless Steel / Powder coated frame.
- **Door** : Steel lock formed construction – optional Double and Single glazed.
- **Acoustic** : Solid panel – 41 db – (BS 5821).

## Features

- Demountable
- Fast Construction
- Maintenance Free
- Sound Proof

## Applications

- **Offices:**
  - Cabins
  - Conference Rooms
- Cafeteria/Canteen
- Theaters
- Banquets
- Security Rooms





Security and Safety Assured

# LOUVERED DOORS

SIOF Louver Doors are perfect for pantries, closets and laundry rooms. They are also useful for fitting rooms and maintenance rooms. These classic, sturdy doors provide both privacy and ventilation & are available in single/ double leaf door configuration. These can also be customized as per requirement.

## Features

- Suitable for internal applications like office cabins, closets and laundry rooms
- It's louver type design permits air flow for good ventilation
- Can be customised in other door options
- Can be single/double leaf door

## Specification

- **Frame Sheet Thickness** : 1.2mm
- **Leaf Sheet Thickness** : 0.8mm
- **Infill**: Honeycomb Kraft Paper
- **Lock System** :
  - Lock: SIOF-ML-50
  - Cylinder: SIOF-ACC-PC-60
- **SS Butt Hinge**: SIOF-SS-BH 4x3x3
- **Door Closer**: SIOF-DC-CURVE
- **Door Handle**: SIOF-11 (D Type Pull Handle)
- **Other Hardware (Optional)** :
  - Kick Plate
  - Drop Seal
  - Door Bumpers
  - Door Stopper
- **MOC** : GPSP with Zinc Coating
- **Finish** : Epoxy Polyester Powder Coated
- **Door Dimension** : upto 2400mm wide and 3000mm height



Security and Safety Assured




# SS FLUSH SWING DOORS

The Stainless Steel Flush Swing Doors are applied in commercial kitchens such as Hotel & Restaurant. SIOF SS Flush Swing Door is infilled with Honeycomb or Glass wool providing rigidity to the door structure for better impact resistance. This door offers a bundle of benefits like great strength, hygienic properties, corrosion resistance in addition to giving an aesthetic appeal to the kitchen. It is mounted on SIOF Plus Hydraulic Bottom Patch, a next generation bottom patch for glass & framed doors; it does not require a cavity on floor for its fixing hence NO CUTTING NO DIGGING of floor.

## Features

1. Customised design options
2. Smooth swing door movement
3. Suitable for any commercial building
4. Infilled with honeycomb or glass wool to provide rigidity to the door structure for better impact resistance
5. Equipped with great strength and hygienic & corrosion resistance properties
6. High aesthetic appeal matching with modern interiors
7. A kick plate can be fastened at the bottom of the door for protection

**People. Customers. Growth.**

 [www.siof.co.in](http://www.siof.co.in)  
 [contact@siof.co.in](mailto:contact@siof.co.in)  
 +91-11-4103-2065







Security and Safety Assured

## CLEAN ROOM DOORS & PARTITION SYSTEMS




SIOF provide Clean Room Doors & Partition Systems in compliance with standards & design requirement of a clean room / controlled environment. A type of clean room door & partition requirement is dependent on type of process facility and its manufacturing & production standards. SIOF's state-of-the-art manufacturing set-up and able team enables it to fulfill such customized requirements for a widely spread customer base.

### Features

- Made for interior applications
- Designed to meet hygienic and stringent requirement of clean rooms
- Can be single/double leaf door
- Customized as per requirement
- Acoustic
- Prevents bacteria growth
- Flush surface, easy to clean
- No pressure leakage



**People. Customers. Growth.**

 [www.sio.co.in](http://www.sio.co.in)  
 [contact@sio.co.in](mailto:contact@sio.co.in)  
 +91-11-4103-2065







Security and Safety Assured

# MODULAR CLEAN ROOM PARTITIONING SYSTEM

Clean Room Systems from SIOF can be applied to any clean room facility or manufacturing setup requiring controlled environment. These systems can be integrated with new as well as existing systems. Modular & simplified construction methods are used for reducing overall construction time and cost.

## Features

- Pharmaceuticals & healthcare
- Drug & Medicine manufacturing
- Electronic
- Semi-conductor
- Wafer-fab
- Telecommunication
- Netscape
- Defence
- Food processing
- Automotive

## Specification

- Frame Sheet Thickness : 1.2mm
- Leaf Sheet Thickness : 0.8mm  
Infill : Honeycomb Kraft Paper  
Glass : Double Glazed Glass 5mm Thick
- Lock System Standard : SIO-ML-45
- Pivot/Hinge SS Butt Hinge : SIOF-SS-BH 4x3x3
- Door Closer : SIOF-DC-CURVE
- Other Hardware :
  - Kick Plate (Optional)
  - Concealed Flush Bolt (Double Leaf Door)
  - Drop Seal
  - Door Bumpers
  - Door Stopper
- MOC : GPSP Sheet with Zinc Coating/Stainless Steel
- Finish : Epoxy Polyester Powder Coating / SS
- Door Dimension : upto 2400mm wide and 3000mm height

# MODULAR CLEAN ROOM SYSTEM

Security and Safety Assured

**Panel Width :** 1200mm, 1150mm and 900mm as standard. Panel thickness of 44/60/80/100/120 mm with ability to carry and conceal services, return air ducts/ risers.

**Panel Height :** Up to 6000mm with provision to have stacked panels for higher level applications

**Base Detail :** Raised / C-Type Base

**Infill Material :** Mineral Wool, Honeycomb kraft paper with aluminium core ensures panel rigidity & Polyurethane Foam

**Panel Weight :** Depend upon Specification and Thickness of Panel

**Surface Finish :** Epoxy Polyester Powder coated as per RAL colours, SS Finish (matt/ mirror finish)

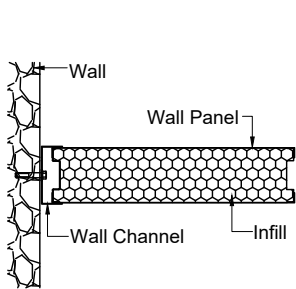
**Panel Connection :** Each Panel is connected to its adjacent unit or door unit with a friction type Heavy Duty Clip. This allows speedy installation and dismantling

**Glazing :** Double flush glazing with 5mm toughened glass on both sides within a stainless Steel / Powder coated framing

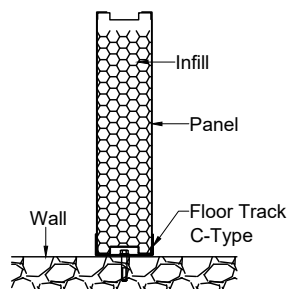
**Door :** Steel lock formed construction – optional double and single glazed

**Acoustic :** Solid panel – Rw 41 db – (BS 5821)

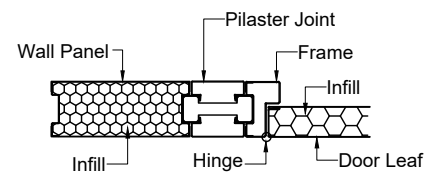
**Air Leakage :** Silicon Sealant for sealed application



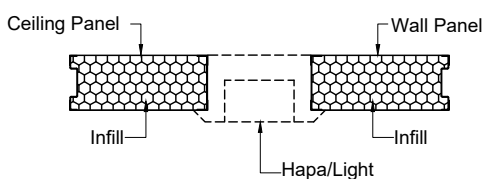
Wall to Panel Joint



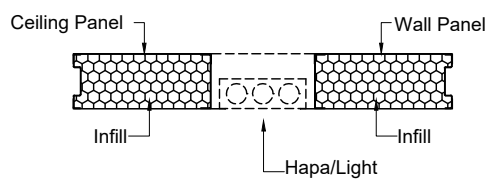
Panel to Floor Joint



Wall Panel to Door (T&G Joint)



Ceiling Cutout without Lip



Ceiling Cutout with Lip

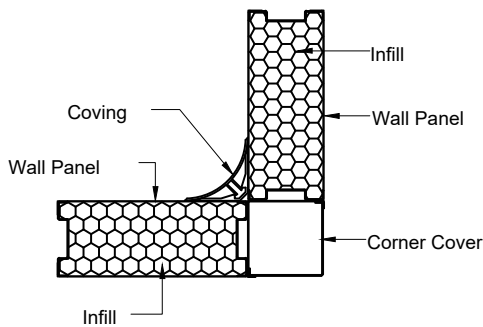


# Panels For Clean Room Partitions

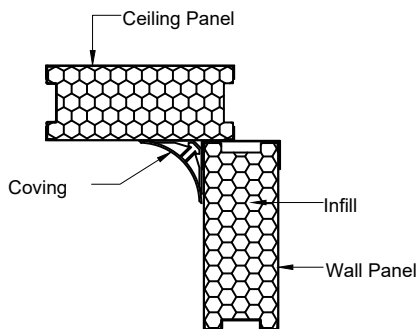
Security and Safety Assured

SIOF Modular Partition Walls are fabricated using minimum 0.8/ 1mm GPSP Sheet /Stainless Steel Sheet with Zinc coating between 90 – 120gsm. They are bonded with Polyurethane Foam or Honeycomb kraft Paper Core or High Density Glass Wool for maximum strength & rigidity.

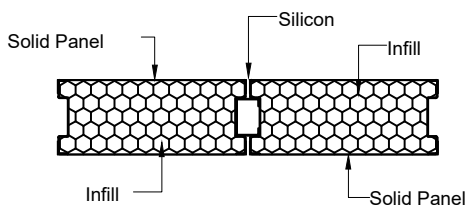
SIOF Partition Walls have been installed successfully in many clean rooms in India and meets the requirement of most advanced electronic manufacturing, food facility, laboratories to healthcare facilities. SIOF offers a complete range of Partition Walls & Ceiling Systems complying with technical specifications of controlled environment rooms. Both Ceiling & Partitions are forming a part of aseptic environment in compliance with REGULATORY validation procedures.



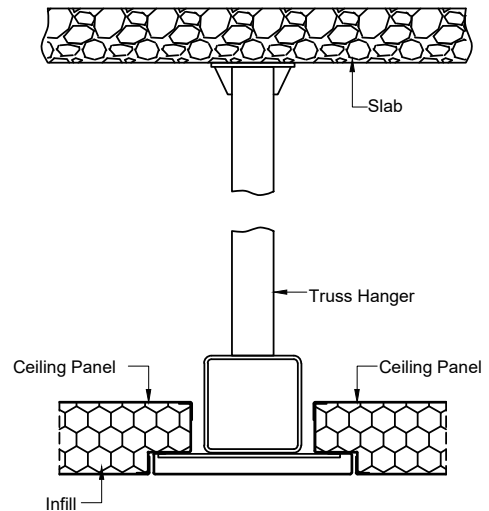
Solid Corner Detail



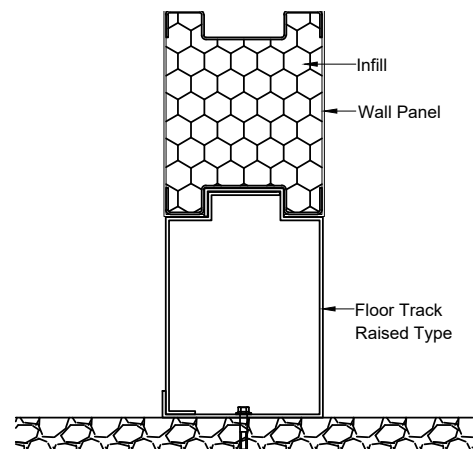
Ceiling to Wall Panel Detail



Panel to Panel (Joining Details)



Ceiling Hanging Detail



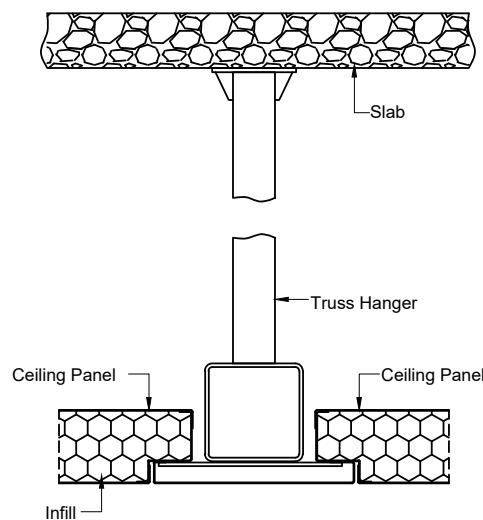
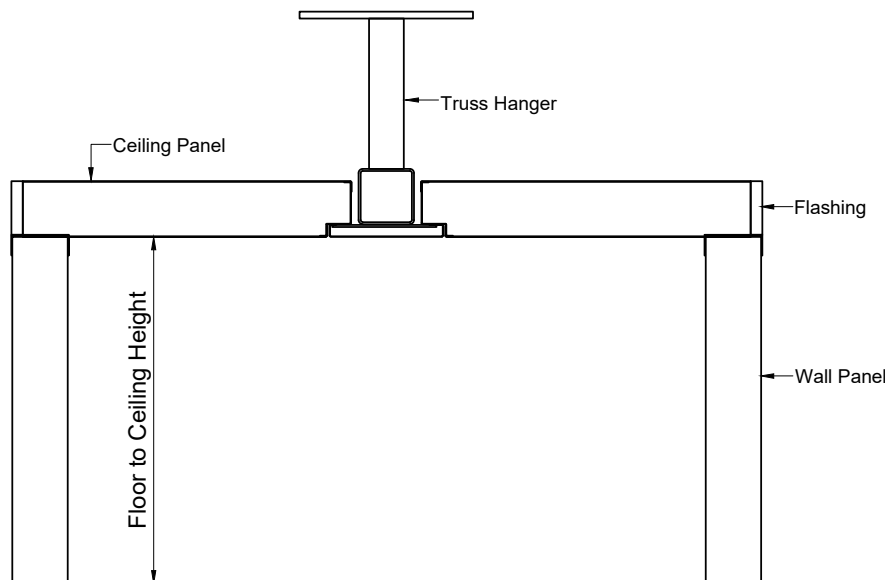
Panel Base Detail

# Load Bearing Ceiling

Security and Safety Assured

Load Bearing Ceiling Panels are made with 0.8mm thick GPSP sheet / stainless steel with zinc coating between 90-120gsm bonded with infill of polyurethane foam or honeycomb kraft paper with aluminium core or glass wool forming a rigid 60mm thick panel to nominal size as required. Modular width of ceiling panel is 900mm standard and can be fabricated up to 4000mm in length. Panels are stiffened properly to allow person to access over the entire surface.

We design ceiling in such a way that it allows incorporating Flush Lighting Fittings, Air-conditioning Filters, Grills, Diffusers and other ceiling mounted equipments and the accuracy within is achieved through laser punched technique.



Ceiling Hanging Details

## Technical Data

- Roof panel is 4000 mm (L) x 900mm(W) x 80mm (Th)
- Each roof panel is designed to withstand concentrated load of 150kg/m<sup>2</sup>
- The self-weight of roof panel (4000mm x 900mm) is conservatively taken as 33kg/m<sup>2</sup>
- Roof panels are self supported upto 3.5 mtrs
- Ceiling can be made self supporting with use of MS and Aluminium Truss.



# WOODEN, PCGI, & GLASS FIRE DOOR

Security and Safety Assured

Secure your infrastructure with SIOF Fire & Safety Doors. We offer good quality customisable doors as per your specifications & budget that can match your interior.

## Features

- Applied on Emergency Exits
- These are Fire Rated Doors for upto 02 hrs fire rating
- Can be Single/Double leaf door
- Hardware can be selected as per requirement such as Panic Bar, door closers, handles etc
- Prevents fire to spread
- Offered with options of Glazing, Fire-resistant, self Closing Louvers
- Customized as per requirement

## Applications

- High Rise Buildings
- Metro Railway Stations
- Airports
- Ships and freight/passenger liners
- Telecom Centers
- Power Plants/Industrial Plants Shopping Malls
- Multiplexes
- Pharmaceutical/Food & Packaging
- Auditoriums
- Garment Processing Units

Wooden Fire Door



PCGI Fire Door



Glass Fire Door



# WOODEN LEAD LINED DOOR

Security and Safety Assured

## Specification

Wooden Lead Lined Door for Nuclear / Radiation Protection having 90% Blockage of Radiation as per AERB / DRS standards, used in Radiology & Nuclear Medicine

- **Frame:** Frame Manufactured out of Hardwood Mirandi / Teakwood of nominal section 120mm x 70mm with 2mm sandwiched Lead Sheet
- **Bearing Hinges:** Stainless Steel Ball Bearing Hinges SIOF-BH 4x3x3
- **Door Closer:** Heavy duty only for 80 kg weight capacity SIOF-DC-CURVE
- **Door coordinator:** SIOF-ACC-DC 4x3x3
- **Exposed Tower bolt:** SIOF-ACC-TB
- **Door Lock:** Mortise Sash Lock with half cylinder, estucheon, lever handle – Complete Set for Push / Pull operation SIOF-DL-45



# OPERATION THEATER DOOR

## Specification

- **Door Blade:** Door core of 60mm thick made with:- 4mm thick. HPCL (High Pressure Compact Laminate) skin at both side of the door to provide better strength and rigidity CFC-free, high density polyurethane puff (density 40kg/m<sup>3</sup>), thickness 52mm to provide better insulation
- **Door Profile:** Door core is surrounded by high grade aluminium extrusion profiles with natural anodizing of 15 microns finish. The aerodynamic design of profiles makes the door ROBUST in its segment league
- **Sliding:** Door can be open to Right Hand Slide and Left Hand Slide
- **Sealing:** Hermetic sealing maintain quick positive pressure, required inside the O.T
- **No Noise:** Self-lubricating high-quality nylon wheels, confirms no noise during door operation
- **Convenience:** Convenient for trolley, wheel chair and heavy equipments movement inside/outside the O.T.



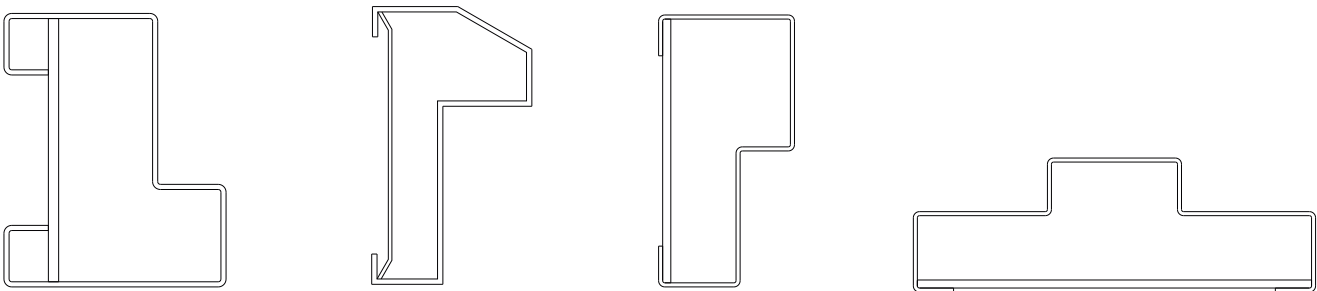
# FIRE FRAME DETAILS

Security and Safety Assured

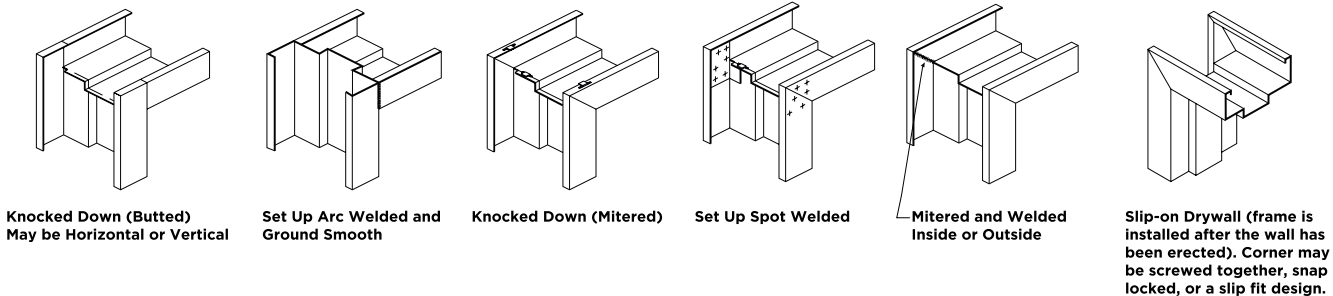
## Door Frames

Available in mitered joint and butted assembly, our frames are supplied in knock down form for easy assembly at site. Welded frames are supplied on special request.

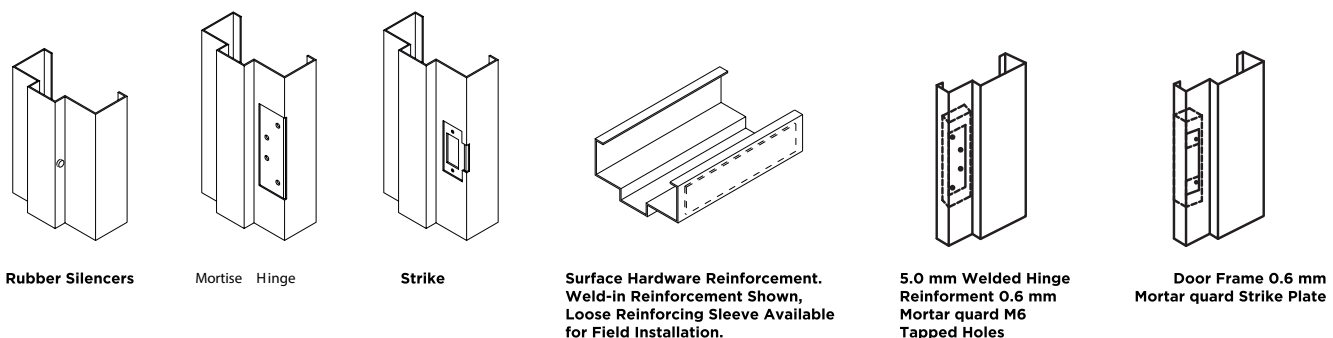
## Standard Frame Details



## Frame Assembly Details For Corner



## Hardware Preparation

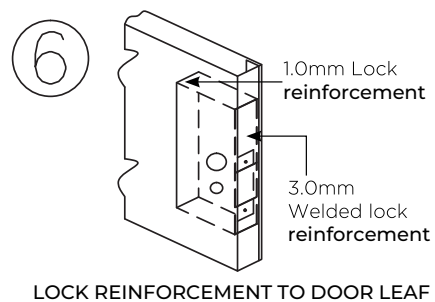
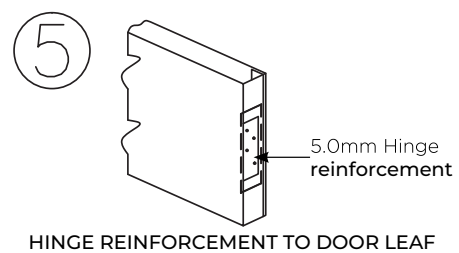
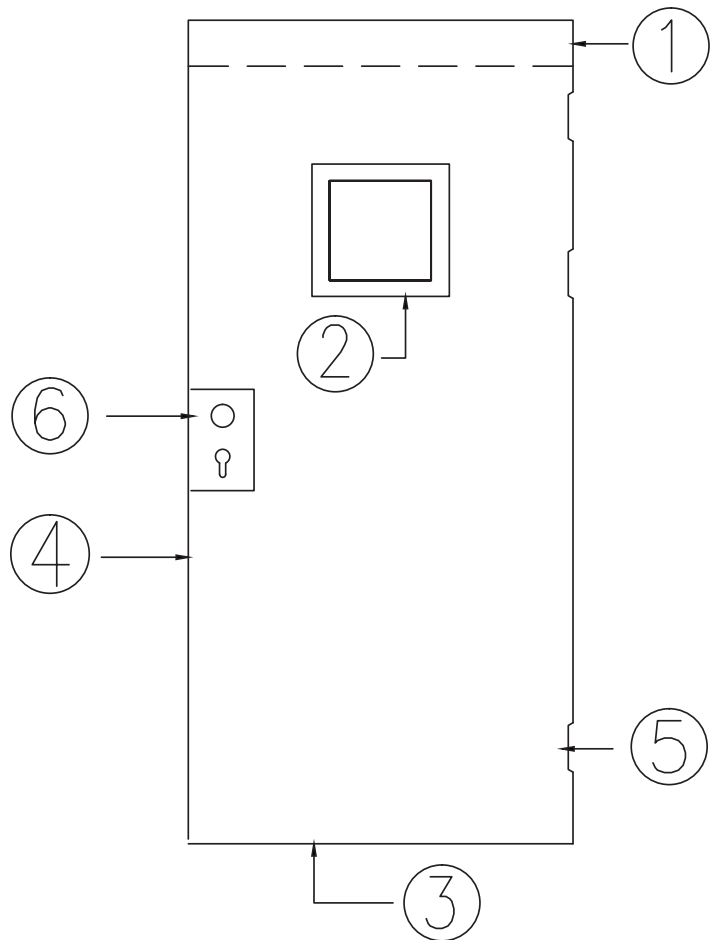
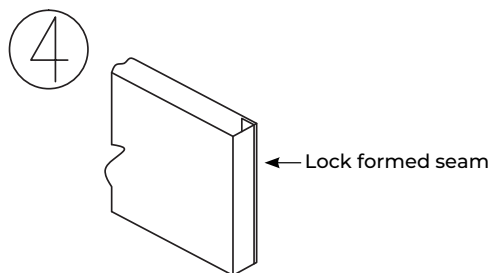
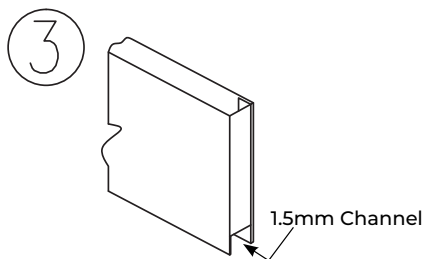
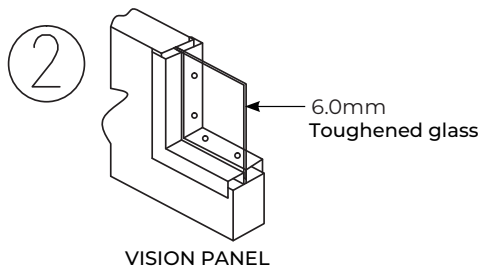
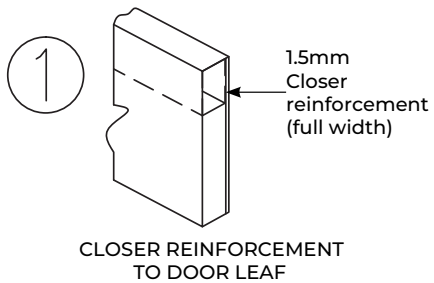


## Features

- Available in GPSP and Stainless Steel.
- Frames available in Single and Double Rebate Profile.
- Frames can also be designed for flush fixing.
- Primed and Painted surface finish

# DOOR LEAF CONSTRUCTION

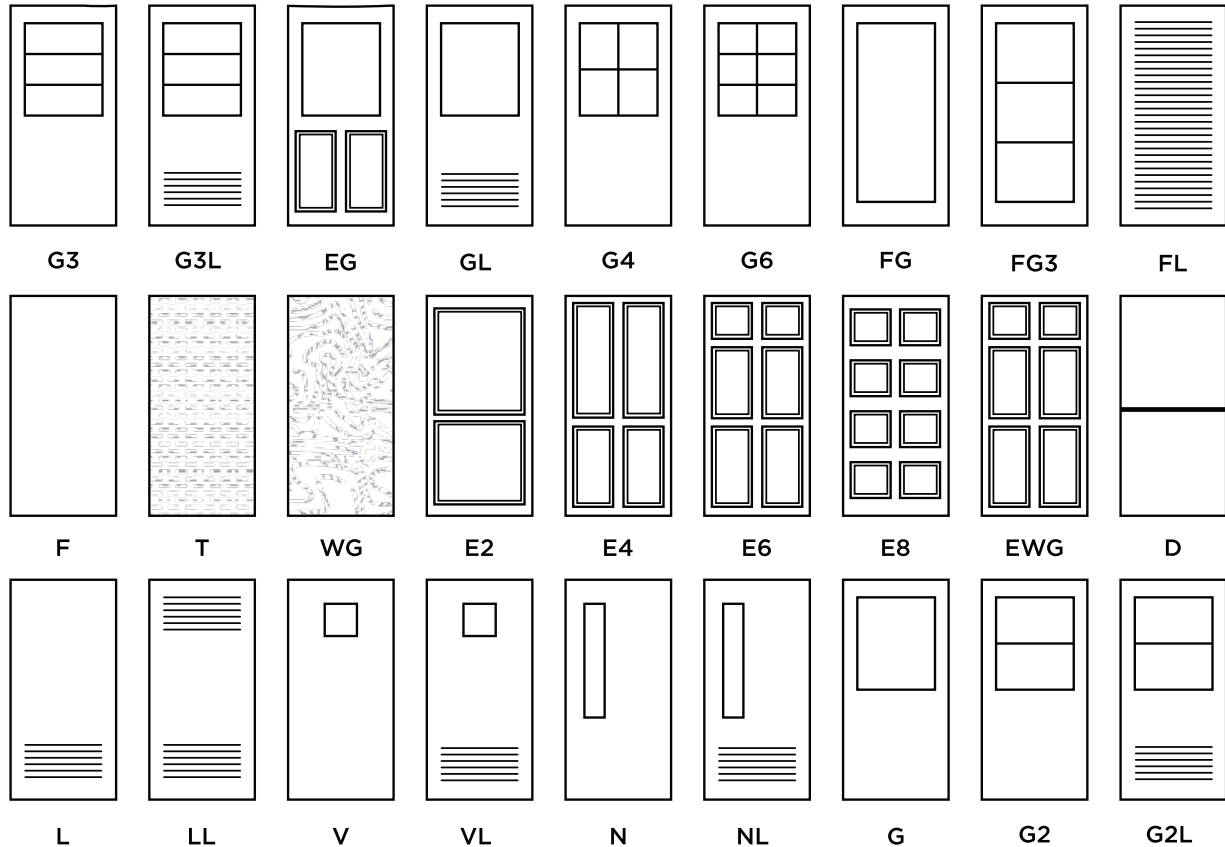
Security and Safety Assured





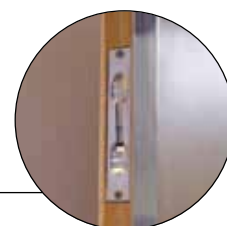
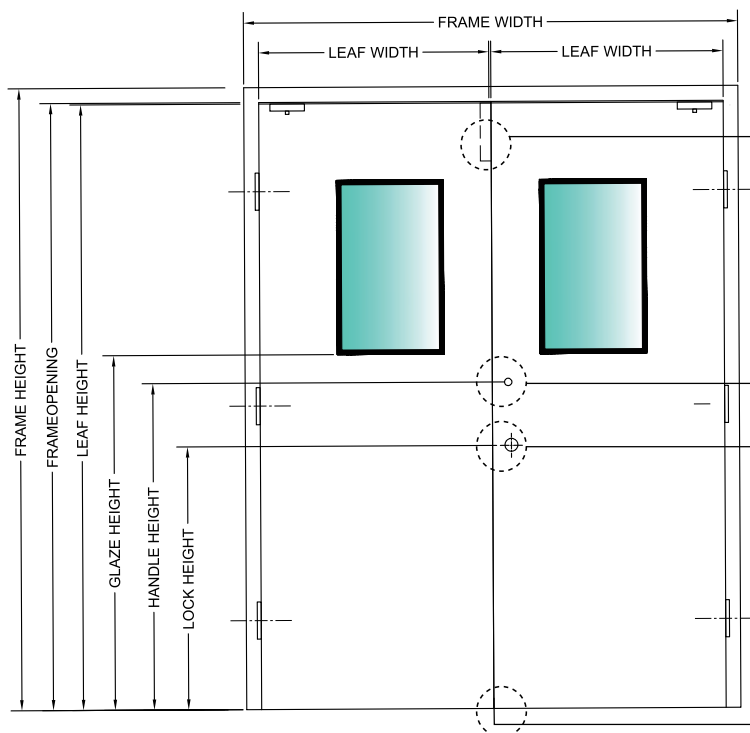
# DOOR LEAF DESIGNS

Security and Safety Assured

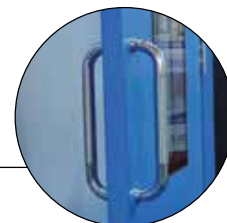


## Nomenclature Letter Symbols

<b>F</b>	- Flush	<b>LL</b>	- Louvered (top or bottom)
<b>T</b>	- Texture	<b>V</b>	- Vision Light
<b>WG</b>	- Wood Grain	<b>VL</b>	- Vision Light and Louvered
<b>E2</b>	- 2 Panel Embossed	<b>N</b>	- Narrow Light
<b>E4</b>	- 4 Panel Embossed	<b>NL</b>	- Narrow Light and Louvered
<b>E6</b>	- 6 Panel Embossed	<b>G</b>	- Half Glass (option G2, G3, G4 and G6)
<b>E8</b>	- 8 Panel Embossed	<b>EG</b>	- Embossed and Half Glass
<b>EWG</b>	- 6 Panel Embossed and Wood Grain	<b>GL</b>	- Half Glass and Louvered
<b>D</b>	- Duch Door	<b>FG</b>	- Full Glass (option FG3)
<b>L</b>	- Louvered (top or bottom)		Full Louvered



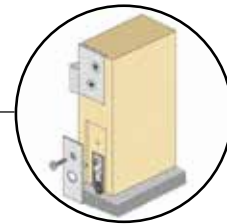
**SIOF Flush Bolt**



**SIOF D Type Handle**



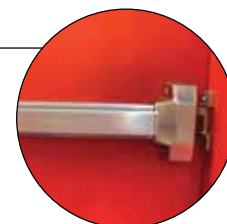
**SIOF Dead Lock**



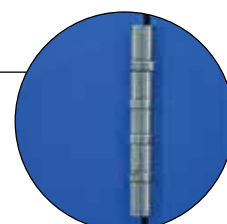
**SIOF Drop Down Seal**



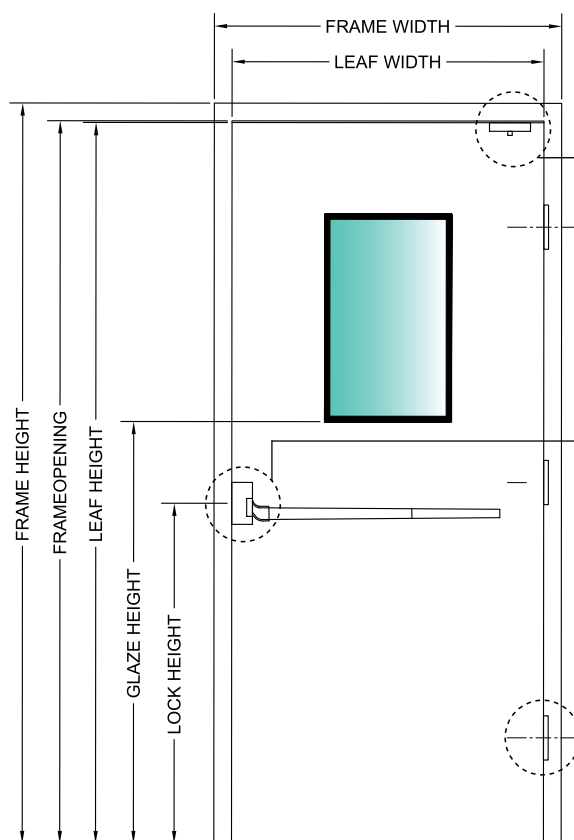
**SIOF Door Closer**



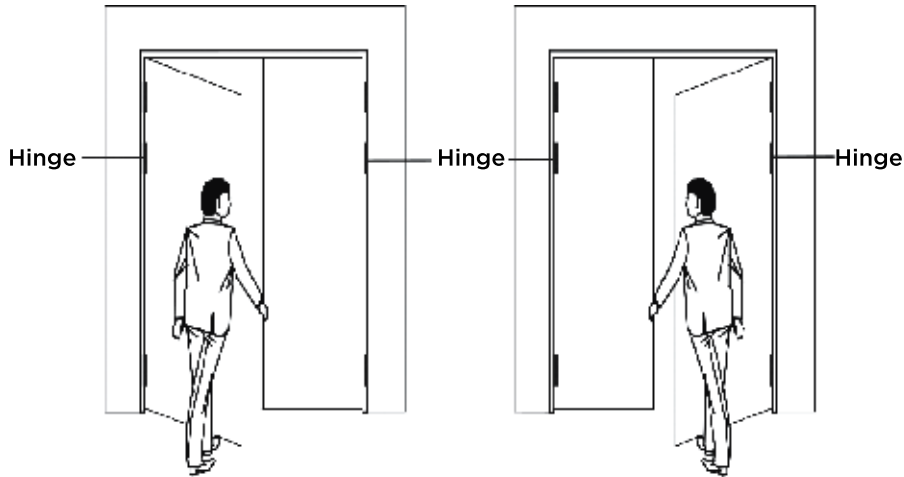
**SIOF Panic Bar**



**SIOF Ball Bearing Hinge**



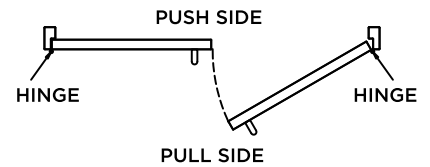
## Double Door



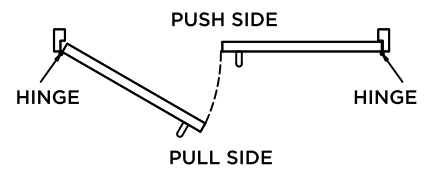
DDLA  
DOUBLE DOOR  
LEFT ACTIVE

DDRA  
DOUBLE DOOR  
RIGHT ACTIVE

### DOUBLE LEAF DOOR

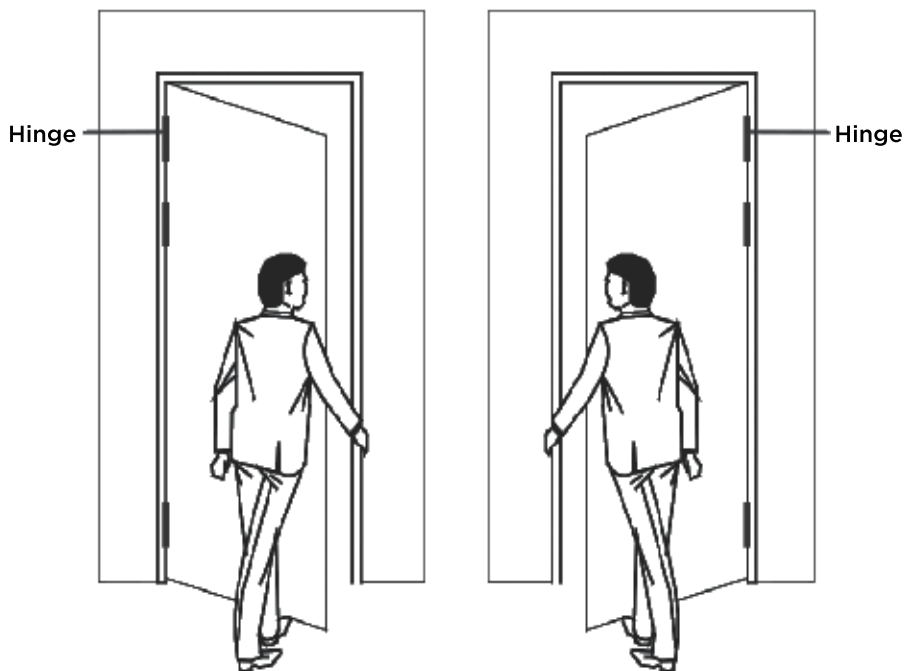


### RIGHT HAND ACTIVE



### LEFT HAND ACTIVE

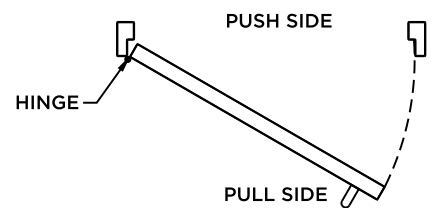
## Single Door



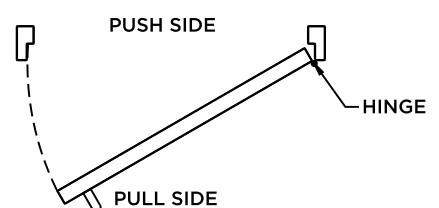
LH  
LEFT HAND

RH  
RIGHT HAND

### SINGLE LEAF DOOR



### LEFT HAND ACTIVE



### RIGHT HAND ACTIVE



Ensure safety with **SIOF's** reliable Fire and Exit Doors.  
Engineered for peace of mind, our doors combine durability  
with sleek design, guarding your exits with precision.



**Sio Vasunddhara International Private Limited**

Mobile: +91-99104-89455 | Phone: +91-11-4310-5879  
[www.sio.co.in](http://www.sio.co.in) | [www.siof.co.in](http://www.siof.co.in) | [contact@sio.co.in](mailto:contact@sio.co.in)

